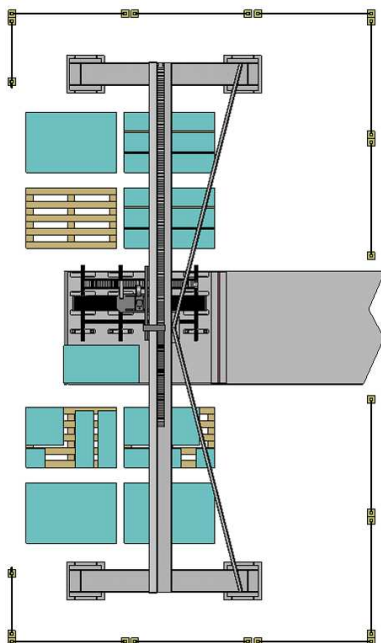
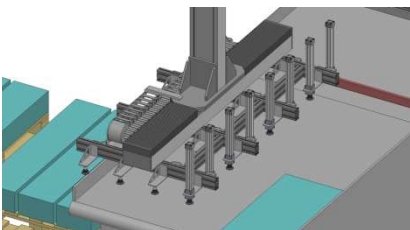


**DETAILS:**



## AUTOMATIC PALLETIZER

**Description:**

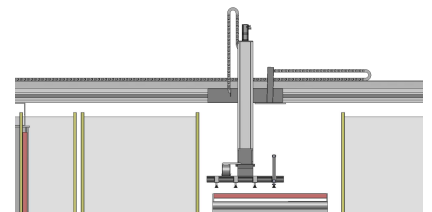
This is an automatic palletizer for punching machine, laser cutting, etc..

The plant is characterized by the use of linear motor for X and Y axis; this type of assemblation gives speed and precisions on positionings.

System of suction could be realized with feeding suckers/ electromagnets/ pneumatic systems as customer's request..

The automatic palletizer is furnished with an industrial Pc with

SCADA System for the management of all functions and positioning optimizations of pieces on europallets.



**Technical details:**

- overall dimensions:  
X axis 8.000mm  
Y axis 2.500mm  
Z axis 1.700mm

Any customization can be engineered and implemented on request.

TECHNICAL DETAILS	
max. X Axis lenght	8.000 mm
max. Y Axis lenght	2.500mm
Max. Z Axis depth	1.700mm